

# TREE PLOTS ALONG AN ALTITUDINAL TRANSECT - YUS CONSERVATION AREA, MOROBE PROVINCE

Workshop on Payments for Environmental Services (PES) and REDD+,  
Forest Conservation and Resource Management and Monitoring, Land  
Management and SABLs

7-8 Feb, 2012. Kokoda Track Motel

Bega Inaho and Banak Gamui  
Papua New Guinea Institute of Biological Research

# Papua New Guinea Institute of Biological Research Inc. (PNGIBR)



- National NGO
- Formed to ensure a biological sustainable future for PNG
- Capacity Building
- Research
- Conservation

# PNGIBR Projects



- Hunting
- Nest Box
- Hogave Biodiversity Monitoring
- Mt. Gahavisuka Biodiversity Monitoring
- Manus Frog
- Echidna
- YUS tree plot
- Bio-culture
- Others

# YUS Tree plot Project



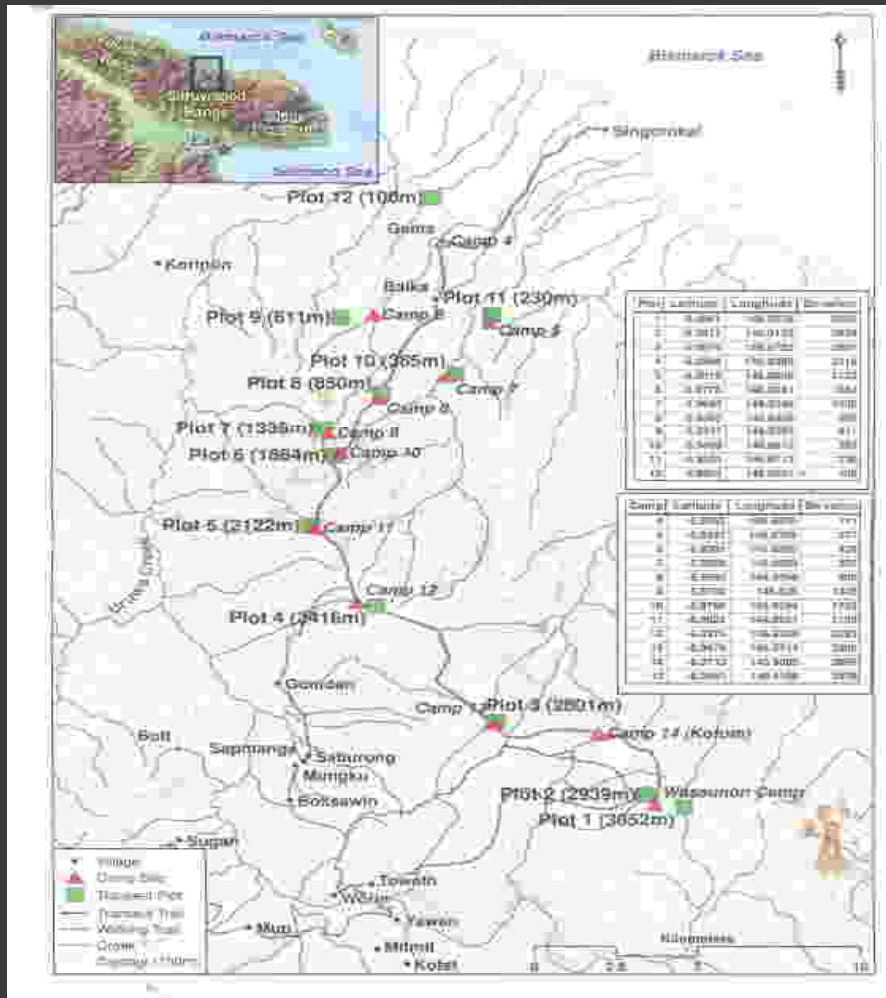
## Aims

Understand the forest structure and composition along altitudinal gradient

Long Term Monitoring to understand forest dynamics and effects of climate change

Create Employment for land owners

# YUS tree plot project



- YUS Conservation Area Morobe Province, PNG
- Accessibility – planes/boats/walk
- 11 one hectare plots (100 – 3050 m a.s.l)

# Data Collected

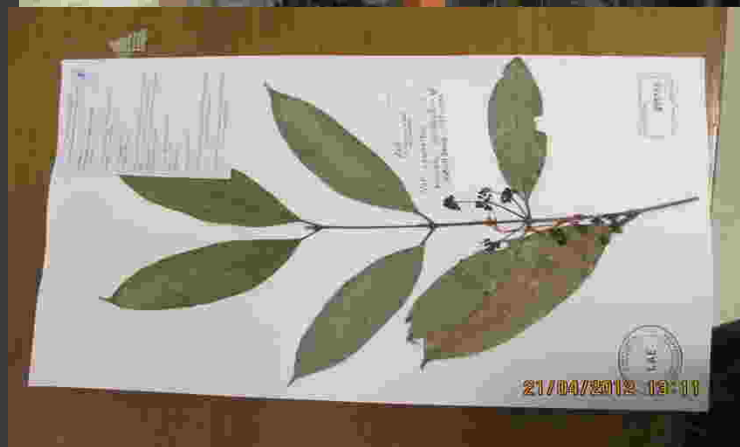


- Forest Structure (tree dbh, height, stem density, life forms)
- Forest Composition (species list – scientific and local names)
- Fertile specimen (photos)
- Phenology

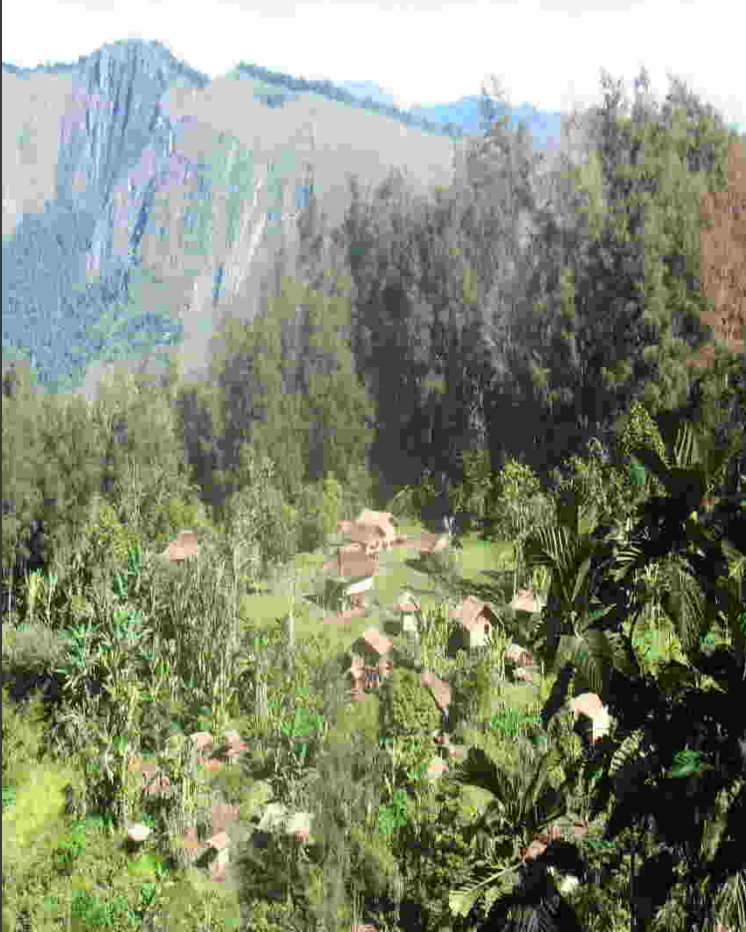
# Project Output



- Land Owners Trained to be semi-professional field assistants
- Honours Thesis
- Large Data on Forest Composition and Structure along an altitudinal gradient
- Fertile tree specimen



# Importance of Project



- Permanent plots
- Supports Land Owners
- Important data source in forest structure, composition, carbon stock etc...
- Phenology to understand climate change effects
- Contributes to forest data deficiency in PNG.

# Obstacles



- Logistics
- Land owner misunderstandings
- Funding



# Conclusion

- ⦿ GIS data – how reliable?
- ⦿ How accurate can we be by extrapolating from other tropical countries
- ⦿ More dirty field work needs to be done to understand and make decisions on our Forest Ecosystems

# Acknowledgement

- ⦿ Conservation International
- ⦿ Tree Kangaroo Conservation Project
- ⦿ James Cook University
- ⦿ FRI
- ⦿ Rigel Jensen, Stephen Mcena and Wendy Cooper
- ⦿ Land Owners

# Thank You !!



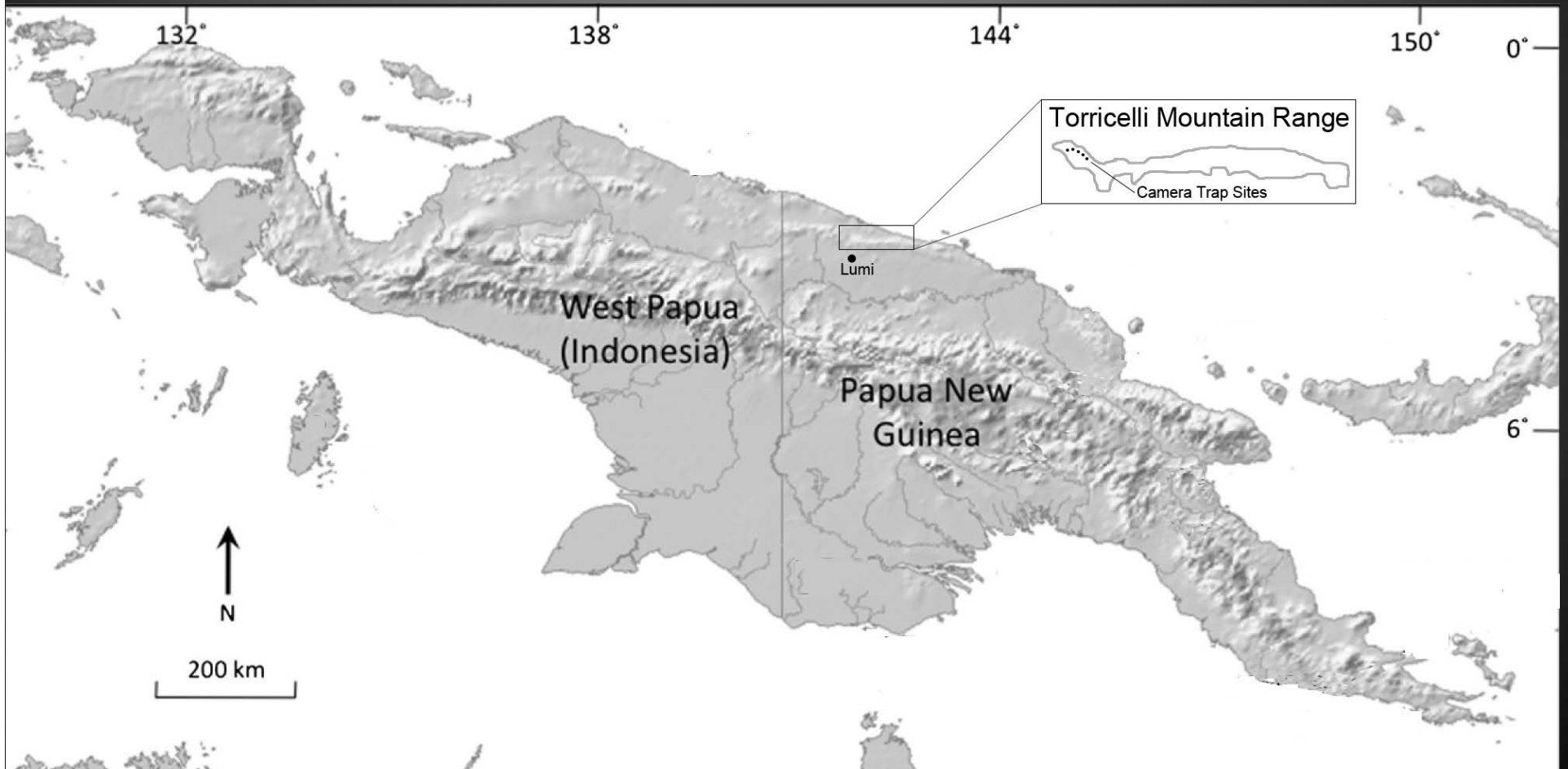
**Tenkile**  
**Conservation Alliance**



# Tenkile Conservation Alliance



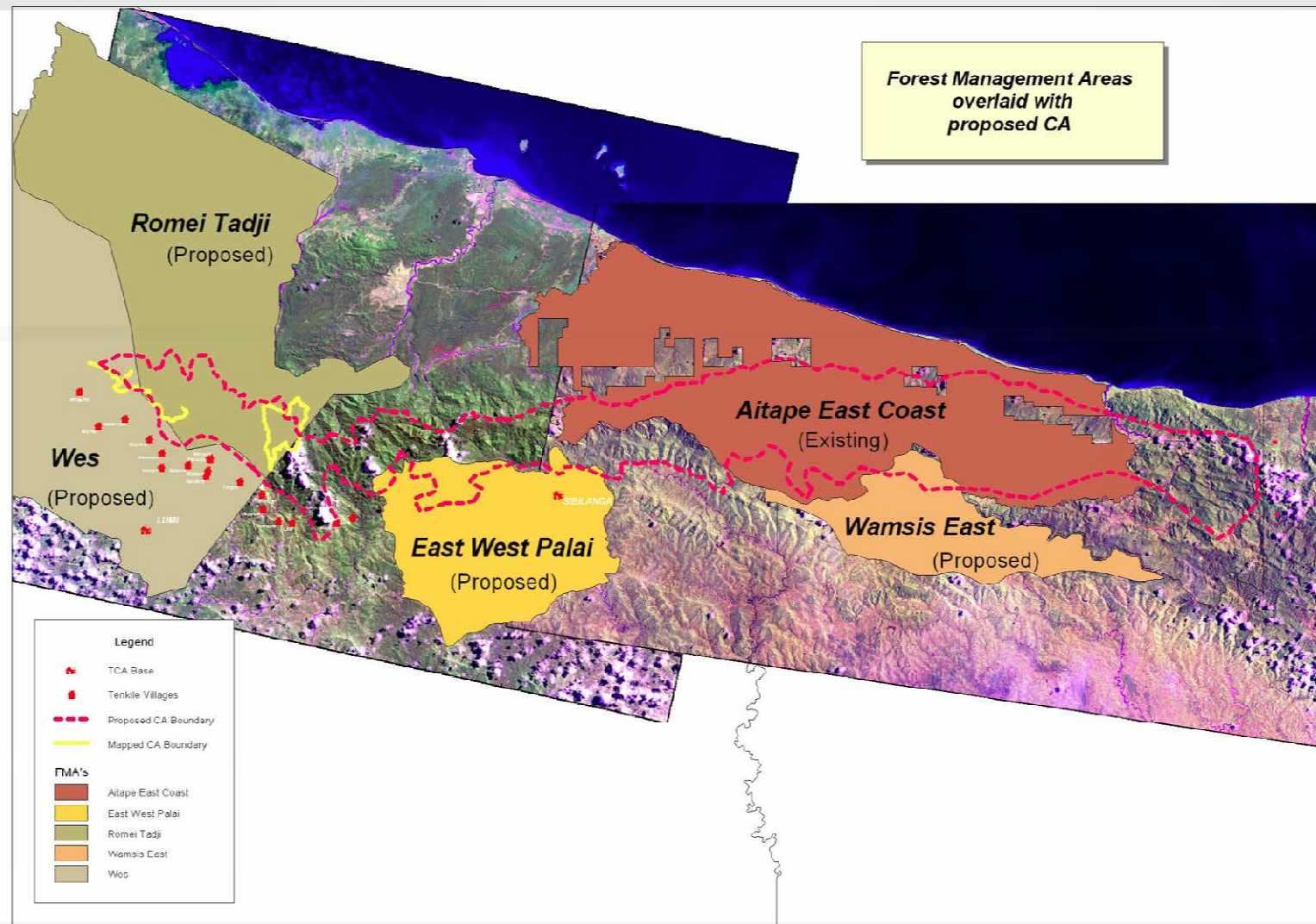
# Tenkile Conservation Alliance



**Tenkile**  
**Conservation Alliance**



# Tenkile Conservation Alliance



# Tenkile Conservation Alliance



# Tenkile Conservation Alliance



2011-06-02 11:20:37 AM M 3/3

○ 18°C



HC600 COVERT

IRCONYA

# Tenkile Conservation Alliance



2011-06-01 10:13:00 PM M 2/3

☁ 17°C



HC600 COVERT

RECONYA

# Tenkile Conservation Alliance



2011-08-10 8:51:43 PM M 1/3

16°C



HC600 COVERT



# Tenkile Conservation Alliance



2012-02-14 5:03:15 PM M 1/3

19°C



HC600 COVERT

